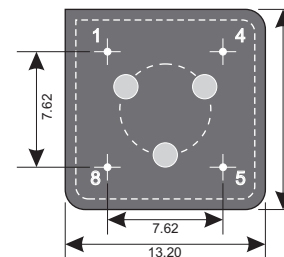
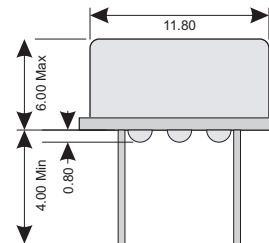
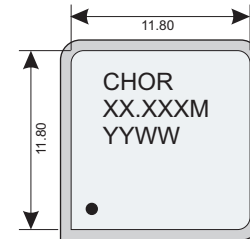




Specifications

Package	CHOR	
Frequency Range (fo)	0.500MHz ~ 70.00MHz	
Logic Family	HCMOS	
Freq. Stability (Df/fo)	±100ppm	
Aging/Year (fa)	±5ppm	
Temp. Range	Operating (TOPR)	0°C ~ +70°C
	Storage (TSTG)	-40°C ~ +100°C

Dimensions (mm)



Electrical

Power Supply	Voltage (VDD)	5.0 ±10%Vdc
	Current (Icc)	10mA Max
Output	Load TTL(N)	15pF
	Voltage (VOL)	10% Vdd
	Voltage (VOH)	90% Vdd
Rise (TR) & Fall (TF) Time		
0.500MHz ~ 25.00MHz		10nS
25.100MHz ~ 70.00MHz		6nS
Symmetry/Duty		45/55

Tri-State

Tri State (Pin 1)	Default (Pin 5)	U2 Option (Pin 5)
4.5Vdc Min	Enabled Active	Disabled High Z
N/C or Open	Enabled Active	Disabled High Z
0.5Vdc Max	Disabled High Z	Enabled Active
Enable Time	10mS Max	10mS Max
Disable Time	150nS Max	150nS Max

Absolute Maximum Ratings

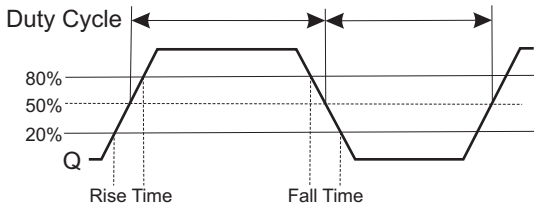
Maximum Storage Temp	-55°C to +125°C
Voltage (VDD)	7.0 Vdc
Input Voltage	0.5Vdc ~ Vdd+0.5Vdc

Connections

Pin 1	Tri-State
Pin 4	Ground
Pin 5	Output
Pin 8	Vdd



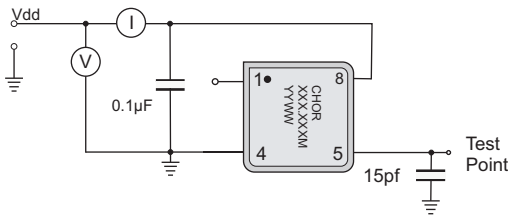
HCMOS Waveform



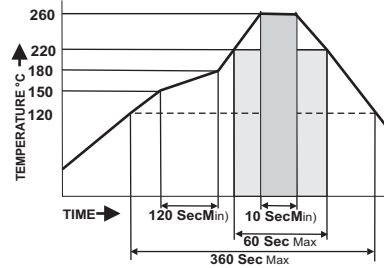
Environmental And Mechanical

Temperature	10 Cycles of -30°C (30Mins), Normal (1Hr), 85°C (30Mins), Normal (1Hr)
Shock	Accelerated at 1000G for 1mS in each perpendicular axis.
Vibration	4 Cycles of 20G acceleration at 20 - 2,000Hz within 4 Minutes in each perpendicular axis.
Solder	Peak Temperature of 260°C Max for 10 Seconds with preheat of 160°C for 90±10% for 10 Seconds for a Maximum of 2 Cycles.

HCMOS Test Circuit

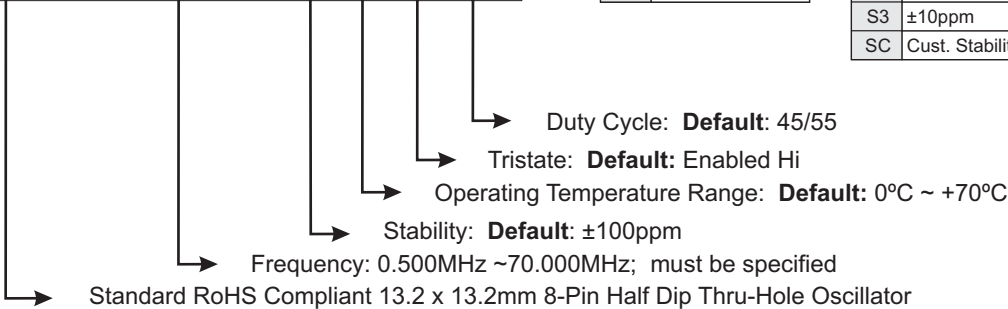


260°C Reflow Profile



Part Number

CHOR - XX.XXX M - SX RX UX QX



Operating Temp

R10	-65°C ~ +150°C
RC	Custom Temp.

Stability

S1	±50ppm
S2	±25ppm
S3	±10ppm
SC	Cust. Stability

Duty Cycle

Q2	47.5/52.5 Duty
----	----------------

Tristate

U2	Lo Enable
----	-----------

Example: **CHOR-10.000M** 10.000MHz, 5.0V ±100ppm Oscillator operating at 0°C ~ +70°C
 Example: **CHOR-50.000M-S2R10** 50.000MHz, 5.0V ±25ppm Oscillator operating at -65°C ~ +150°C