



Specifications

Part Number		CJ01R
Frequency		20.000MHz ~ 125.000MHz
Logic Family		HCMOS
Freq. Stability (Df/fo)		±100ppm*
Temp. Range	Operating (TOPR)	0°C ~ +70°C
	Storage (TSTG)	-55°C ~ +125°C
Start Up Time		5mS Max
Jitter		10pS Min (12KHz - 20MHz)

* Inclusive of Calibration, Temperature Stability, Shock Vibration and Aging for 10 years

Electrical - HCMOS

Power Supply	Voltage (VDD ±10%)	3.3V
	Current (Icc)	24mA MAX
	Standby Current	10µA Max
Output	Load	10 TTL / CMOS Compatible
	Voltage (VOL)	0.2Vdd Max
	Voltage (VOH)	0.8Vdd Min
Rise (TR) & Fall (TF) Time		2nS Max
Symmetry/Duty		45/55

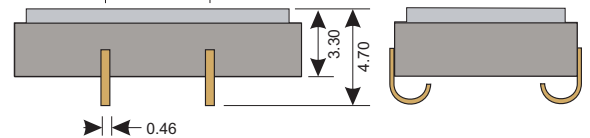
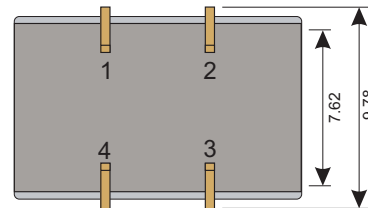
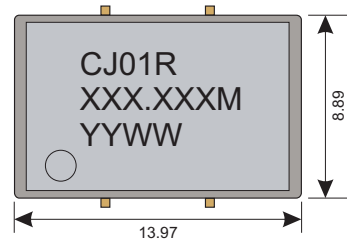
Output Enable/Disable

Tri State Pin 1 (P1) Pin 2 (P2)	Output Pin 3 Enable Hi (U1)	Output Pin 3 Enable Lo (U2)
70%Vcc Min, N/C or Open	Enabled Active	Disabled High Z
30%Vcc Max	Disabled High Z	Enabled Active
Enable Time	200µS Max	
Disable Time	50µS Max	

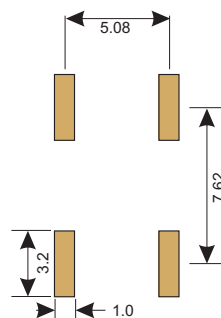
Absolute Maximum Ratings

Maximum Storage Temp	-55°C to +85°C
Voltage (VDD)	4.0 VDC
Input Voltage	0.5Vdc ~ Vdd+0.5Vdc

Dimensions (mm)



Recommended Pad Layout (mm)

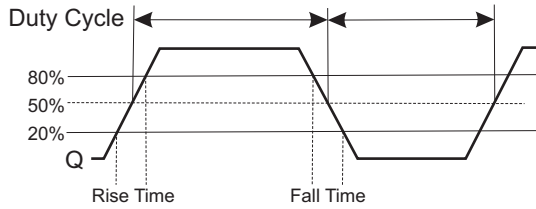


Connections

Pin 1	Enable/Disable
Pin 2	Ground
Pin 3	Output
Pin 4	Vdd



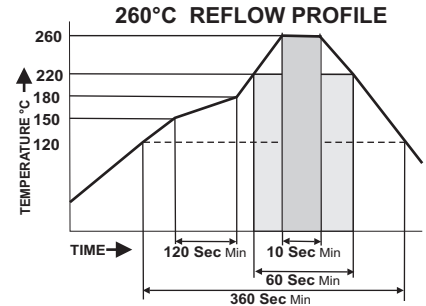
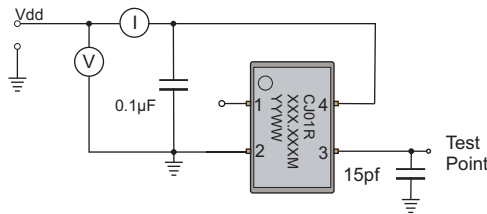
HCMOS Waveform



Environmental And Mechanical

Temperature	10 Cycles of -30°C (30Mins), Normal (1Hr), 85°C (30Mins), Normal (1Hr)
Shock	Accelerated at 1000G for 1mS in each perpendicular axis.
Vibration	4 Cycles of 20G acceleration at 20 - 2,000Hz within 4 Minutes in each perpendicular axis.
Solder	Peak Temperature of 260°C Max for 10 Seconds with preheat of 160°C for 90±10% for 10 Seconds for a Maximum of 2 Cycles.

CMOS Test Circuit



Part Number

CJ01R - XXX.XXX M- VX SX RX UX QX-T

Stability	Duty Cycle	OP Temp
S1 ±50ppm	Q2 47.5/52.5 Duty	R6 -40 ~ +85°C
S2 ±25ppm	QC Cust. Duty Cycle	
S3 ±10ppm	Tristate	Voltage
SC Cust. Stability	U2 Lo Enable	V5 5.0 Volt

- Tape & Reel: **Default:** Tape & Reel (No Option)
- Duty Cycle: **Default:** 45/55
- Tristate: **Default:** Enabled Hi
- Operating Temperature Range: **Default:** 0°C ~ +70°C
- Stability: **Default:** ±100ppm
- Voltage: **Default:** 3.3 Volts
- Frequency: 20.000MHz ~125.000MHz; must be specified
- Standard RoHS Compliant 13.97 x 8.89mm (4)Pin J-Lead SMT Oscillator

Example: **CJ01R-40.000M-T** 40.000MHz, ±100ppm Oscillator operating at 0°C ~ +70°C, delivered on Tape & Reel

Example: **CJ01R-40.000M-S2R6-T** 40.000MHz, ±25ppm Oscillator operating at -40°C ~ +85°C, and delivered on Tape & Reel

Tape & Reel

