

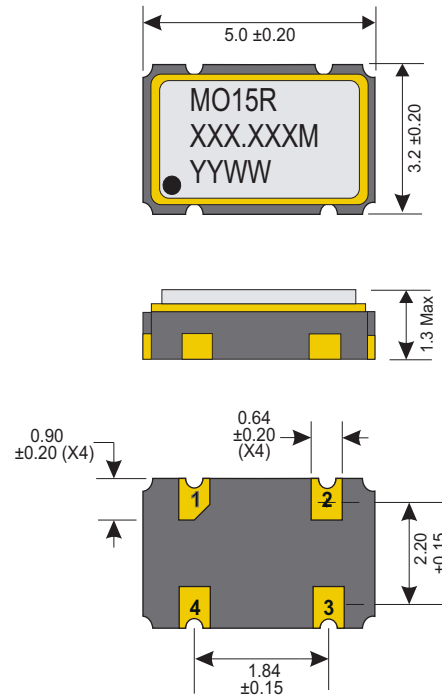


Oscillator Specifications

Part Number		MO15R
Frequency		1.000MHz ~ 165.000MHz
Frequency Stability		±100ppm *
Aging		±5ppm /year Max
Temp. Range	Operating (T_{OPR})	-20°C ~ +70°C
	Storage (T_{STG})	-55°C ~ +125°C
Start Up Time		10mS Max
Phase Jitter RMS		1.0pS Max Fj=12KHz to 20MHz
Period Jitter P-P		100 pS Max
Period Jitter RMS		25 pS Max

* Inclusive of Calibration, Temperature Stability, Shock Vibration and Aging for 10 years

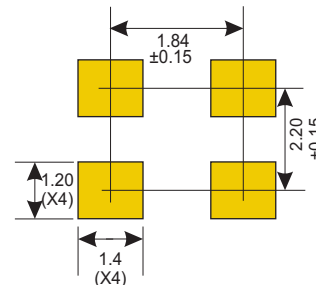
Dimensions (mm)



Electrical Specifications

Logic Family		HCMOS	
Power Supply	Voltage (Vcc)	1.8Vdc ±10%	
	Current (Iop)	1.0MHz~ 20.0MHz	10mA
		20.0MHz~ 50.0MHz	15mA
	50.1MHz~165.0MHz	25mA	
	Standby Current	10µA	
Output	Load	15pF	
	High (Voh)	Vdd - 0.4 Min	
	Low (Vol)	0.4V Max	
Symmetry/Duty		45/55% at 50% of waveform	
Rise (TR) & Fall (TF) Time		1.0MHz ~ 9.9MHz	6.0nS
		10.0MHz ~ 39.9MHz	5.0nS
		40.0MHz ~ 69.9MHz	4.0nS
		70.0MHz ~ 165.0MHz	3.0nS

Recommended Pad



Enable / Disable

Enable / Disable	(Pin 1)	Output (Pin 3)
	Open (N/C)	Active
	0.7Vdd (Min)	Active
	0.3Vdd (Max)	High Z
Enable / Disable Time		En: 100nS Max Dis: 100nS Max

Connections

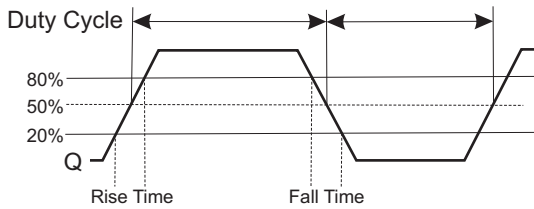
Pin 1	Enable / Disable
Pin 2	Ground
Pin 3	Output
Pin 4	+Vdd



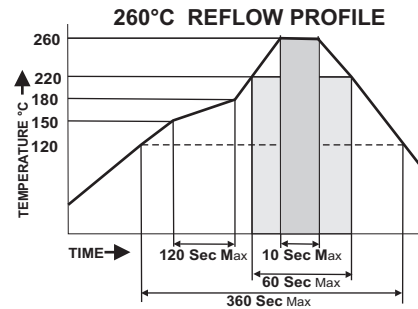
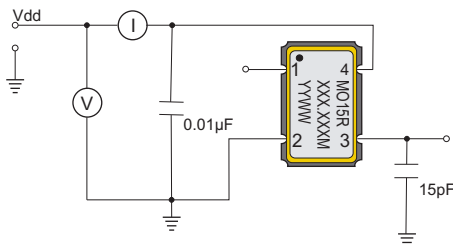
Environmental And Mechanical

Temperature	10 Cycles of -30°C (30Mins), Normal (1Hr), 85°C (30Mins), Normal (1Hr)
Shock	Accelerated at 1000G for 1mS in each perpendicular axis.
Vibration	4 Cycles of 20G acceleration at 20 - 2,000Hz within 4 Minutes in each perpendicular axis.
Solder	Peak Temperature of 260°C Max for 10 Seconds with preheat of 160°C for 90±10% for 10 Seconds for a Maximum of 2 Cycles.

Waveform



HCMOS Test Circuit



Part Number

MO15R- XXX.XXX M-SX RX UX-T

Stability	
S1	±50ppm
S2	±25ppm
SC	Cust. Stability

Temp Range	
R6	-40°C ~ +85°C

Enable / Disable	
U2	Lo En.

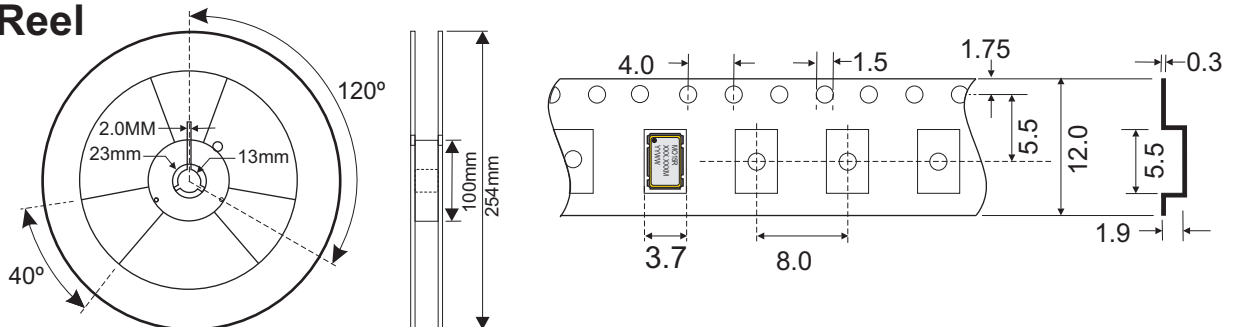
- Tape & Reel
- Enable / Disable Option **Default:** Enabled Hi
- Temperature Range Options **Default:** -20°C ~ +70°C
- Stability Options **Default:** ±100ppm
- Frequency: 1.000MHz ~ 165.000MHz
- Standard RoHS Compliant 5.0 x 3.2mm SMD Oscillator

Options not specified default to the values indicated on the data sheet.

Example: **MO15R-50.000M-T** is a MO15R Package, 50.000MHz, 1.8Vdc, Operating at ±100ppm stability from -20°C ~ +70°C, Delivered on Tape & Reel

Example: **MO15R-50.000M-S2R6-T** is a MO15R Package, 50.000MHz, 1.8Vdc, operating at ±25ppm stability from -40°C ~ +85°C, Delivered on Tape & Reel

Tape & Reel



SPECIFICATIONS ARE SUBJECT TO CHANGE WITHOUT NOTICE.

PLEASE CONTACT YOUR IMPACT SALES REPRESENTATIVE FOR CUSTOM SPECIFICATIONS, CURRENT INFORMATION, PRICING AND AVAILABILITY.

7121 Magnolia Avenue, Riverside, CA 92504 - Tel: (951) 441-3322
www.impactllc.com