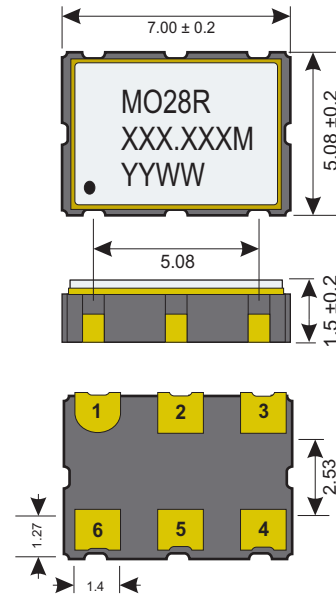




## Specifications

<b>Part Number</b>		MO28R
<b>Frequency</b>		60.000MHz ~ 350.000MHz
<b>Logic Family</b>		LVPECL
<b>Freq. Stability (Df/fo)</b>		±100ppm
<b>Power Supply</b>	<b>Voltage (V<sub>cc</sub>)</b>	2.5V ±5%
	<b>Current (I<sub>op</sub>)</b>	80mA Max
<b>Temp. Range</b>	<b>Operating (TOPR)</b>	0°C ~ +70°C
	<b>Storage (TSTG)</b>	-55°C ~ +125°C
<b>Jitter</b>		1.0pS RMS Max F <sub>j</sub> =12KHz ~ 20MHz
<b>Aging</b>		±3.0ppm 1st Year ±15ppm over 15 years

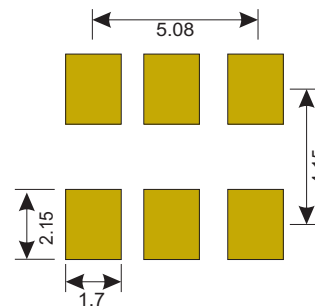
## Dimensions (mm)



## Electrical

<b>Power Supply</b>	<b>Voltage (V<sub>DD</sub>)</b>	2.5 V <sub>DC</sub> ±5%
	<b>Current (I<sub>CC</sub>)</b>	55mA Typ; 80mA Max
<b>Stand-by current</b>		30uA Max
<b>Output</b>	<b>Load LVPecl</b>	50Ω to V <sub>dd</sub> -2.0V
	<b>Voltage (V<sub>OL</sub>)</b>	V <sub>dd</sub> -1.620Vdc Max
	<b>Voltage (V<sub>OH</sub>)</b>	V <sub>dd</sub> -1.025Vdc Min
	<b>CURRENT</b>	V <sub>OH</sub> =21mA; V <sub>OL</sub> =6mA
<b>Rise (TR) &amp; Fall (TF) Time</b>		300pS Typ; 700pS Max
<b>Start Time</b>		10.0mS Typ
<b>Symmetry/Duty</b>		40/60% @ 50% Level

## Land Pattern (mm)



## Enable / Disable

Default	Output (Pin 4&5)	U2 Option (Pin 4&5)
1.75Vdc Min (Pin 1)	Enabled Active	Disabled InActive
N/C or Open (Pin 1)	Enabled Active	Enabled Active
0.75Vdc Max (Pin 1)	Disabled InActive	Enabled Active
<b>Enable Time</b>	200μS Max	200μS Max
<b>Disable Time</b>	50μS	50μS Max

## Connections

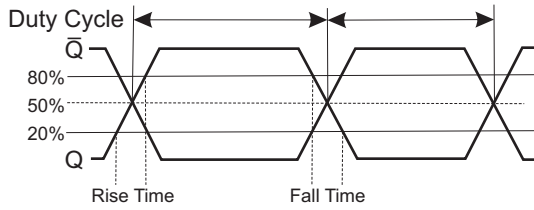
<b>Pin 1</b>	Enable/Disable
<b>Pin 2</b>	N/C
<b>Pin 3</b>	Case/GND
<b>Pin 4</b>	Output
<b>Pin 5</b>	Output N
<b>Pin 6</b>	+V <sub>dd</sub>



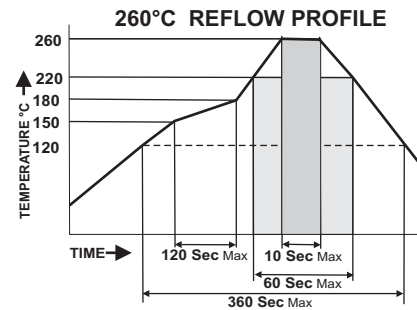
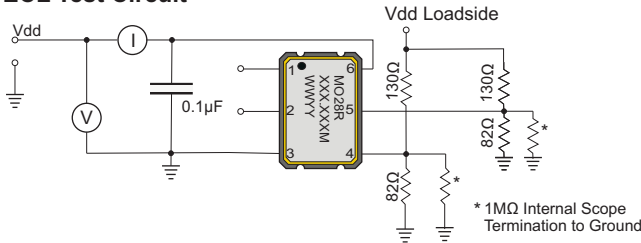
## Environmental And Mechanical

<b>Temperature</b>	10 Cycles of -30°C (30Mins), Normal (1Hr), 85°C (30Mins), Normal (1Hr)
<b>Shock</b>	Accelerated at 1000G for 1mS in each perpendicular axis.
<b>Vibration</b>	4 Cycles of 20G acceleration at 20 - 2,000Hz within 4 Minutes in each perpendicular axis.
<b>Solder</b>	Peak Temperature of 260°C ±5% for 10 Seconds with preheat of 160°C for 90±10% for 10 Seconds for a Maximum of 2 Cycles.

### LVPECL Waveform



### LVPECL Test Circuit



### Part Number

<b>MO28R-XXX.XXX-SX RX UX QX-T</b>	Stability S1 ±50ppm S2 ±25ppm SC Cust. Stability	Temp Range R6 -40°C ~ +85°C	Enable / Disable U2 Enabled Lo
		Duty Cycle Q1 45/55 Duty	

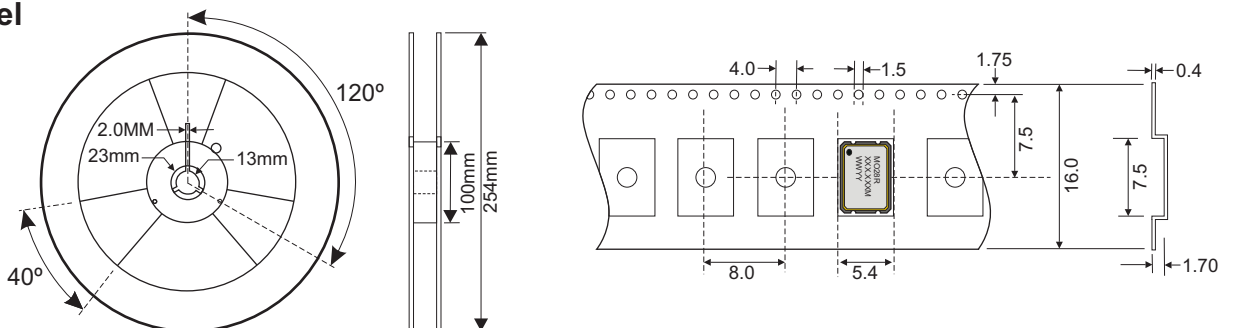
Tape & Reel  
 Duty Cycle **Default:** 40/60  
 Enable / Disable **Default:** Enabled Hi  
 Temperature Range Options **Default:** 0°C ~ +70°C  
 Stability Options **Default:** ±100ppm  
 Frequency: 60.000MHz ~ 350.000MHz; This selection must be specified.  
 Standard RoHS Compliant 5.0 x 7.0mm (6) Pad SMD Oscillator

Options not specified default to the values indicated on the data sheet.

Example: **MO28R-70.000M-T** is a 70.000MHz, 2.5Vdc, Operating at ±100ppm stability from 0°C ~ +70°C, Delivered on Tape & Reel

Example: **MO28R-70.000M-S2R6-T** is a 70.000MHz, 2.5Vdc, operating at ±25ppm stability from -40°C ~ +85°C, Delivered on Tape & Reel

### Tape & Reel



SPECIFICATIONS ARE SUBJECT TO CHANGE WITHOUT NOTICE.

PLEASE CONTACT YOUR IMPACT SALES REPRESENTATIVE FOR CUSTOM SPECIFICATIONS, CURRENT INFORMATION, PRICING AND AVAILABILITY.

7121 Magnolia Avenue, Riverside, CA 92504 - Tel: (951) 441-3322  
www.impactllc.com