



Specifications

Part Number		MOM8R
Frequency (fo)		1.000MHz ~ 125.000MHz
Logic Family		HCMOS
Freq. Stability (Df/fo)		±100 ppm
Temp. Range	Operating (TOPR)	-10°C ~ +70°C
	Storage (TSTG)	-55°C ~ +125°C
RMS Phase Jitter		1pS Max RMS

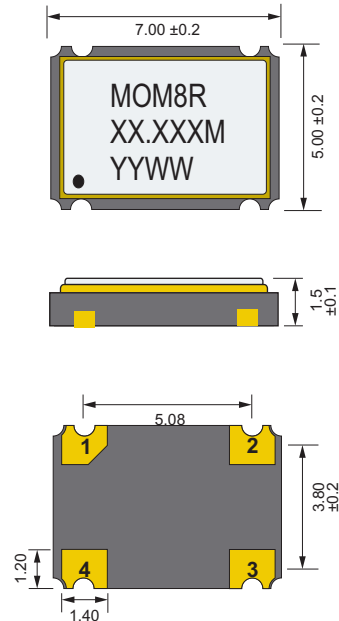
Electrical

Power Supply	Voltage (VDD)	2.5 VDC ±10%
	Current (Icc)	
	1.0MHz - 15.0MHz	8mA
	15.1MHz - 32.0MHz	15mA
Stand-by current	32.1MHz - 50.0MHz	25mA
	50.0MHz - 125.0MHz	35mA
	10uA Max	
	Output	Load
1.0 - 50.0MHz		50pF
50.0 - 100.0MHz		25pF
100.1 - 125.0MHz		15pF
Voltage (VOL Max.)	10% Vdd	
	Voltage (VOH Min.)	
		90% Vdd
Start Time	1.0MHz - 32.0MHz	5mS Max
	32.1MHz - 80.0MHz	10mS Max
Rise (Tr) & Fall (Tf) Time	1.0MHz - 20.0MHz	6nS Typ. 8ns Max
	20.1MHz - 80.0MHz	3nS Typ. 5ns Max
Duty Cycle		40/60% @ 50% Level (HCMOS) 45/55% @ 50% Level (TTL)

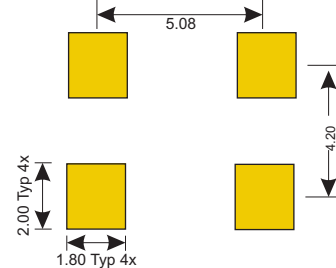
Tri-State

U Option (Page 2)	Default	U2
70%Vcc Min (Pin 1)	Enabled Active (Pin 3)	Disabled High Z (Pin 3)
N/C or Open (Pin 1)	Enabled Active (Pin 3)	Disabled High Z (Pin 3)
30%Vcc Max (Pin 1)	Disabled High Z (Pin 3)	Enabled Active (Pin 3)
Enable Time	10mS Max	10mS Max
Disable Time	150nS Max	150nS Max

Dimensions (mm)



Land Pattern (mm)



Connections

Pin 1	Tri-State
Pin 2	Ground
Pin 3	Output
Pin 4	Vcc



EU RoHS
EU RoHS
Leaf
Compliant



Reach
Compliant



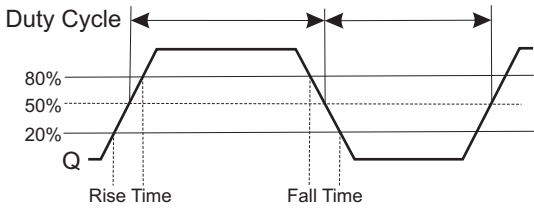
China
RoHS
Compliant



Conflict
Minerals
Free



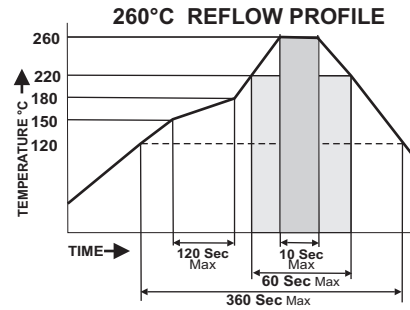
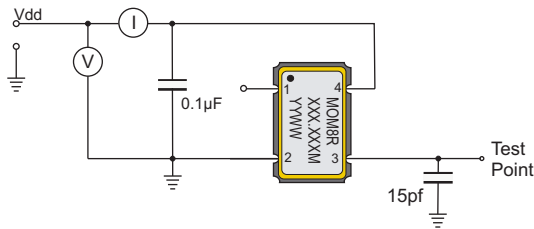
Waveform



Environmental And Mechanical

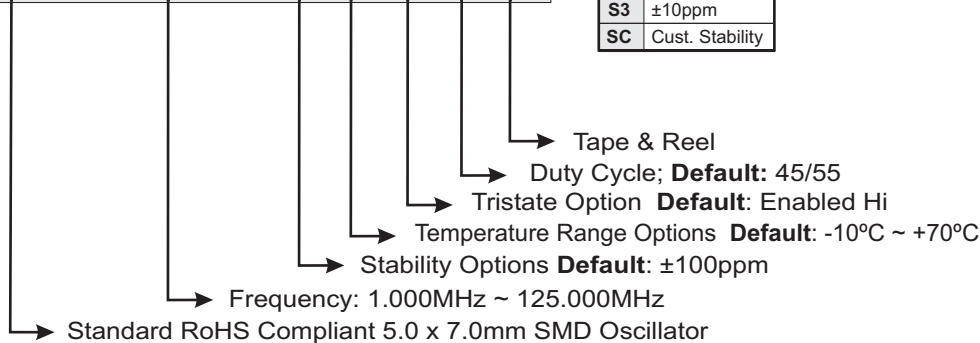
Temperature	10 Cycles of -30°C (30Mins), Normal (1Hr), 85°C (30Mins), Normal (1Hr)
Shock	Accelerated at 1000G for 1mS in each perpendicular axis.
Vibration	4 Cycles of 20G acceleration at 20 - 2,000Hz within 4 Minutes in each perpendicular axis.
Solder	Peak Temperature of 260°C Max for 10 Seconds with preheat of 160°C for 90±10% for 10 Seconds for a Maximum of 2 Cycles.

HCMOS Test Circuit



Part Number

MOM8R-XX.XXXM - SX RX UX QX-T



Stability	Temp Range	Tri-State Pin
S1 ±50ppm	R6 -40 ~ +85°C	U2 Tristate Lo En.
S2 ±25ppm	RC Custom Temp.	Duty Cycle
S3 ±10ppm		Q2 47.5/52.5 Duty
SC Cust. Stability		

Options not specified default to the values indicated on the data sheet.

Example: **MOM8R-50.000M-T** is a MOM8R Package, 50.000MHz, 2.5Vdc, Operating at ±100ppm stability from -10°C ~ +70°C Delivered on Tape & Reel

Example: **MOM8R-50.000M-S2R6-T** is a MOM8R Package, 50.000MHz, 2.5Vdc, operating at ±25ppm stability from -40°C ~ +85°C Delivered on Tape & Reel

Tape & Reel

