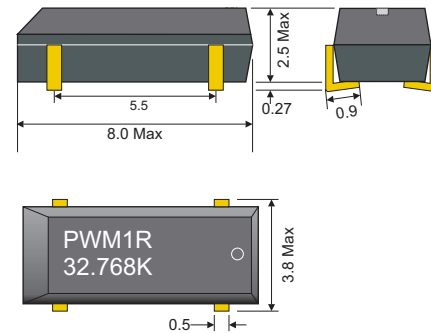




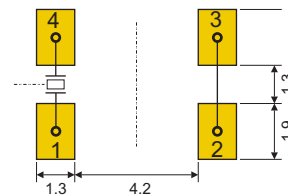
Specifications

Package		PWM1R
Frequency (fo)		32.768KHz
Additional Frequencies		32.000KHz 60.000KHz 77.5030KHz 36.000KHz 65.636KHz 96.000KHz 38.000KHz 75.000KHz 100.000KHz 38.400KHz 76.800KHz 40.000KHz 77.500KHz
Frequency Range		30.000KHz ~ 100KHz
Frequency Stability	Calib. Tol. @ 25°C	±20ppm for 32.768KHz ±30ppm for other frequencies
	Parabolic Coeffic.	-0.034 ±0.006ppm/°C ²
	Aging @25°C ±3°C First Year (fa)	±3ppm Max (32.768KHz) ±5ppm max (other frequencies)
Temp. Range	Turnover (TO)	25°C ±5°C
	Operating (TOPR)	-40°C ~ +85°C
	Storage (TSTG)	-55°C ~ +125°C
Drive Level (DL)		1.0 mW Max
Capacitance	Motional (C1)	0.003pF Typ
	Load (CL)	12.5pF Typ
	Shunt (CO)	1.35pF Typ (32.768KHz) 0.8pf - 1.7pf typ. (Other frequencies)
	Ratio (r)	450 Typ. (32.768KHz) 425 - 800 typ. (Other frequencies)
Resis- tance	Insulation (IR)	500MΩ Min
	Shock	±5ppm Max
	Equiv. Series (R1)	50KΩ Max

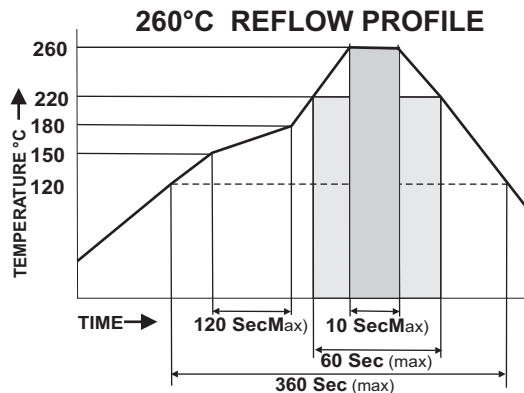
Dimensions (mm)



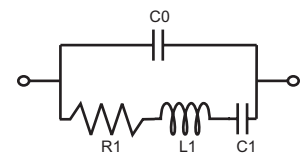
Recommended Pad (mm)



Crystal Connection Pin 1/4



Equivalent Circuit



- C0 Shunt Capacitance
- R1 Equivalent Series Resistance
- L1 Motion Inductance
- C1 Motion Capacitance



Environmental And Mechanical

Temperature	10 Cycles of -30°C (30Mins), Normal (1Hr), 85°C (30Mins), Normal (1Hr)
Shock	Accelerated at 1000G for 1mS in each perpendicular axis.
Vibration	4 Cycles of 20G acceleration at 20 - 2,000Hz within 4 Minutes in each perpendicular axis.
Solder	Peak Temperature of 260°C Max for 10 Seconds with preheat of 160°C for 90±10% for 10 Seconds for a Maximum of 2 Cycles.

Part Number

PWM1R - XX.XXX K - SCX - XX T

Tolerance Stability

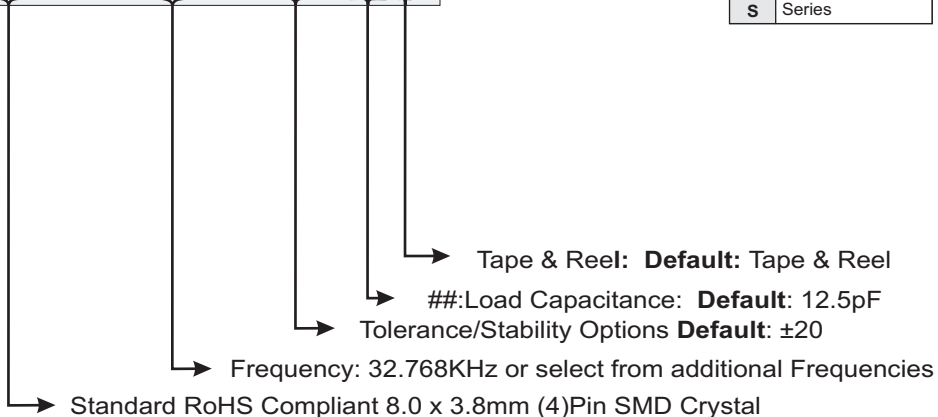
SC	Cust. Stability
-----------	-----------------

Load Cap

06	6pF Load
##	Custom Load
S	Series

Options

T	Tape & Reel
----------	-------------



Example: **PWM1R-32.768K-T** 32.768KHz, ±20ppm, fundamental Xtal with ESR of 50KΩ, operating at -40°C ~ +85°C, and delivered on Tape & Reel

SPECIFICATIONS ARE SUBJECT TO CHANGE WITHOUT NOTICE.

PLEASE CONTACT YOUR IMPACT SALES REPRESENTATIVE FOR CUSTOM SPECIFICATIONS, CURRENT INFORMATION, PRICING AND AVAILABILITY.

7121 Magnolia Avenue, Riverside, CA 92504 - Tel: (951) 441-3322
 www.impactllc.com