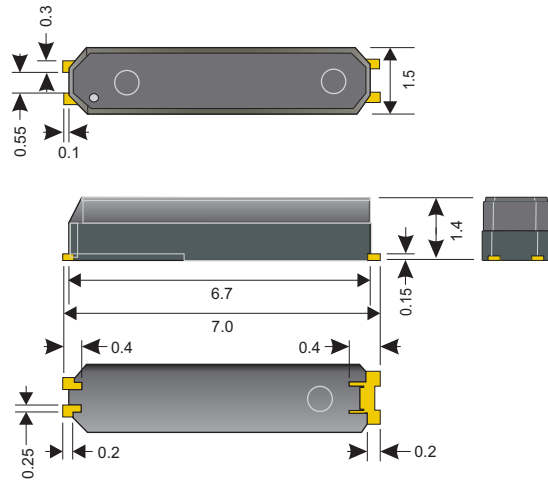




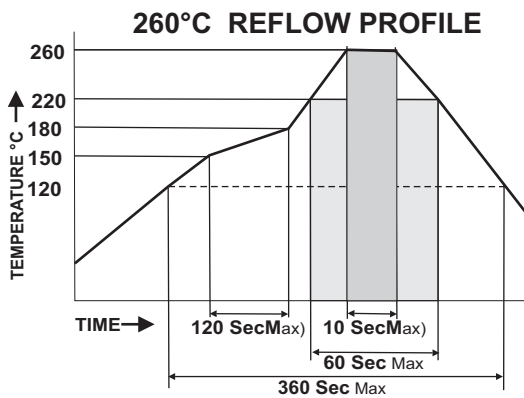
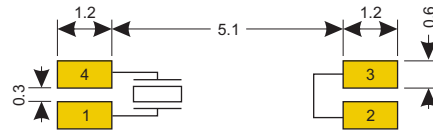
Specifications

Package		PWM5R
Frequency Range (fo)		32.768kHz
Frequency Tolerance		±20ppm@25°C
Frequency Stability		-0.035ppm/°C ² @ Parabolic Coef.
Insulation Resistance		500MΩ
Turnover Temp.		+25°C±5°C
Temp. Range	Operating (TOPR)	-40°C ~ +85°C
	Storage (TSTG)	-55°C ~ +125°C
Drive Level (DL)		1.0μW
Capacitance	Load (CL)	12.5pF
	Shunt (CO)	0.8pF
Equiv. Series Resist. (R1)		65KΩ

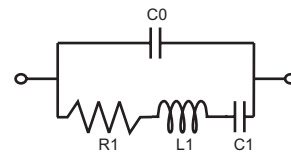
Dimensions (mm)



Recommended Pad



Equivalent Circuit



- C0 Shunt Capacitance
- R1 Equivalent Series Resistance
- L1 Motion Inductance
- C1 Motion Capacitance



Environmental And Mechanical

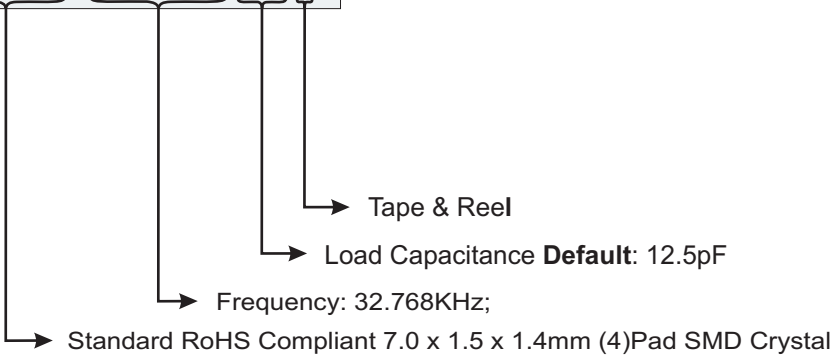
Temperature	10 Cycles of -30°C (30Mins), Normal (1Hr), 85°C (30Mins), Normal (1Hr)
Shock	Accelerated at 1000G for 1mS in each perpendicular axis.
Vibration	4 Cycles of 20G acceleration at 20 - 2,000Hz within 4 Minutes in each perpendicular axis.
Solder	Peak Temperature of 260°C Max for 10 Seconds with preheat of 160°C for 90±10% for 10 Seconds for a Maximum of 2 Cycles.

Part Number

PWM5R - 32.768 K - XX - T

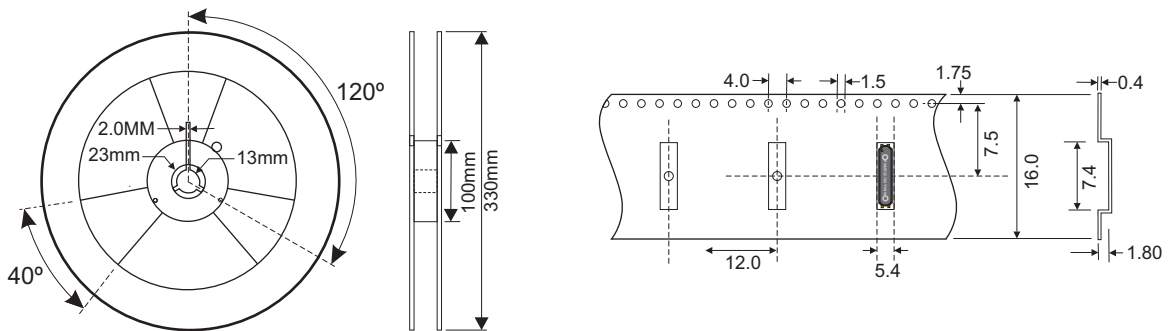
Load Cap	
##	Custom Load
S	Series

Options	
T	Tape & Reel



Example: **PWM5R-32.768K-T** 32.768KHz, ±20ppm Xtal with ESR of 65KΩ, operating at -40°C ~ +85°C, and delivered on Tape & Reel

Tape & Reel



SPECIFICATIONS ARE SUBJECT TO CHANGE WITHOUT NOTICE.

PLEASE CONTACT YOUR IMPACT SALES REPRESENTATIVE FOR CUSTOM SPECIFICATIONS, CURRENT INFORMATION, PRICING AND AVAILABILITY.

7121 Magnolia Avenue, Riverside, CA 92504 - Tel: (951) 441-3322
www.impactllc.com